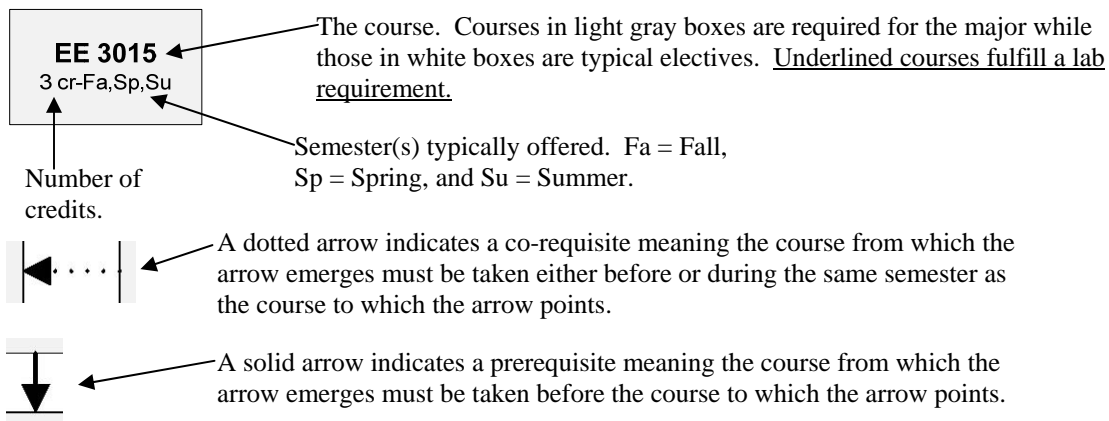


# Prerequisite and Semester Course Chart

This tool is meant to aid Electrical and Computer Engineering undergraduate students plan their courses. The charts include information on prerequisites and co-requisites, required courses, and semesters in which courses are typically offered. Please be aware that this is only a tool and there is no guarantee of accuracy in regards to the semesters in which courses are offered. This tool has been carefully designed but many factors go into the decision to offer a course in a particular semester. The summer especially, can be hard to predict. If you notice any errors please email Kyle Dukart at [kdukart@umn.edu](mailto:kdukart@umn.edu).

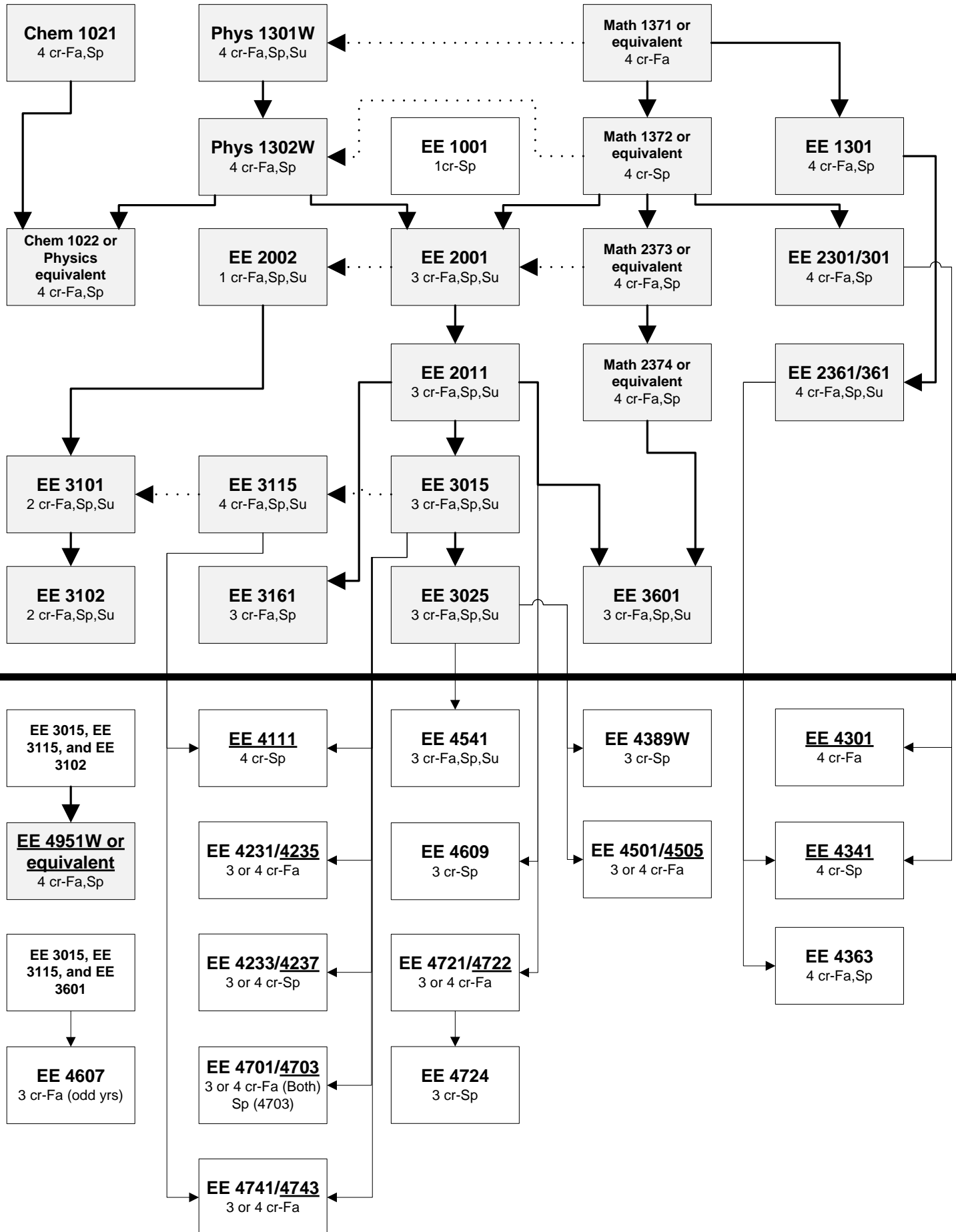
## Key

A box represents a course or multiple related courses.



Courses above the solid line are typically taken in the first 3 years of a degree program. Courses below are remaining requirements or typical electives. Be aware that not all electives are found on the chart so don't necessarily limit yourself to the courses you see listed. A complete list of electives can be found in the Curriculum Guides.

# Electrical Engineering Prerequisite and Semester Course Chart



# Computer Engineering Prerequisite and Semester Course Chart

